

MEADOWOOD MANOR TOWER

575 St. Anne's Road
Winnipeg, MB
R2M 5B2
(204) 257-2394

INDEX

	Page
Organization & Mission Statement	2
General Information	2 - 3
Parking	3
Heating and Air Conditioning	3
Smoking	4
Fire and Safety	4
Services Provided	4 - 7
Recreation Opportunities	8
Apartment Layout	9

Email: info@meadowood.ca

Website: www.meadowood.ca

Organization

Meadowood Manor is owned and operated by the Manitoba Baptist Home Society Inc. and is a non-profit corporation, licensed by the Province of Manitoba.

Mission Statement

Meadowood Manor is a residential facility founded by the Baptist Churches. Our mission is to provide a Christian care facility and programs developed primarily for elderly residents. Guided by the compassion of Jesus Christ, we pursue our mission by developing and managing human resources, facilities and programs to satisfy our residents' physical, social, emotional and spiritual needs. Our goal is to provide a Christian setting that preserves the personal dignity of our residents in a peaceful, safe, respectful and supportive environment.

General Information

Meadowood Manor Tower Elderly Persons Housing (EPH) is an 89-suite **Independent Living** Senior's Home. There are 45 bachelor suites and 44 one-bedroom suites. An annual Rental Contract is required; however, the contract may be terminated with a minimum of a monthly notice either on the first or on the fifteenth of the month. The Penalty for breaking the Annual Rental Contract is one half month's rent. Rent must be paid with by pre-authorized payment.

Parking

Outdoor parking stalls with plug-in receptacles are available at an extra charge.

Heating and Air Conditioning

Electric baseboard heating with individual room temperature control is provided in each suite. Hallways and common areas are air conditioned. Tenants may provide their own room air conditioners if they choose.

Smoking

Our home is a smoke free building. Tenants and visitors are ***not*** allowed to smoke in the building ***or on the property***. This decreases the risk of fire and improves air quality for everyone.

Fire Safety

Our building conforms to the latest fire regulations and is fully equipped with sprinklers. Staff in the adjoining Personal Care Home (PCH) will also respond to fire alarms.

Services Provided

1. **Meal Service** – Meals (lunch and dinner) are available in the adjoining Personal Care Home dining room by purchasing pre-paid meal cards. This can be done through the Front Office.

2. **Chaplaincy Services** – The Chaplain conducts interdenominational church services each Sunday as well as other programs, encouraging spiritual growth and social interaction. This includes visitation of Tenants in their apartments or in the hospital, and counseling with families. The Chaplain is available for funerals and other services as called upon.

There is “Morning Song” every morning at 10:00 a.m. in the PCH. Sunday morning services at 9:45 a.m. in the PCH Fellowship Hall (with Communion Service the 1st Sunday of the month). Fellowship Hour is Wednesday at 2:00 p.m. in Upper Room on the 10th Floor. Sing-Along is held the second and fourth Monday of the month at 7:00 p.m. in the Fellowship Hall.

Catholic Service is held on the 3rd or 4th Friday of each month at 2:00 p.m. in the PCH Fellowship Hall on the availability of the Priest.

Chaplaincy services are not government funded, but are supported by donations from residents, tenants, their families, and supporting churches. Donations are gratefully accepted and tax receipts are issued.

3. **Foot Care** – a variety of Foot Care Nurses advertise their services on the main bulletin board. Appointments are made by the tenant directly with the Foot Care Nurse of their choice.
4. **Salon Services and Barber** – A Shop in the adjoining Personal Care Home is open Tuesdays to Fridays. Appointments are made with Helen, the hairdresser, at 257-8167.
5. **Security** – All entrance doors are kept locked. Each tenant can let visitors in via the Enterphone Intercom system through their telephone.
6. **Laundry** – The laundry room is available on the Main Floor. Tenants receive a Coinomatic Laundry Card at admission that can be preloaded with a dollar value by using either a debit or credit card. The pre-load machine is located in the laundry room.
7. **Newspapers** – The Free Press and Winnipeg Sun can be delivered to your suite. Arrangements can be made with the Winnipeg Free Press at 697-7001 or the Winnipeg Sun at 632-6506.
8. **Groceries** – Safeway provides a van for shopping on Tuesday morning at 9:20 a.m. with return approximately 1 hour later. Sobeys provides a van for shopping on Thursdays at 1:00 p.m. with a

return approximately 1 hour later and Co-Op provides a van for shopping on Wednesday mornings around 10:15 am with a return approximately 1 hour later.

9. **Bus Service** – A bus stop with shelter is located in front of the building on St. Anne’s Road. To receive information regarding schedules call 986-5700. Vital Transit Services (633-2022) provides transportation for individuals or groups with walkers and wheelchairs.

10. **Mail** – A mail box is located near the front entrance of the adjoining PCH. Tenants’ individual mailboxes are located in the front lobby.

11. **Housekeeping** – Meadowood does not offer housekeeping services. Tenants who require assistance with housekeeping would be required to make their own arrangements for assistance with housekeeping.

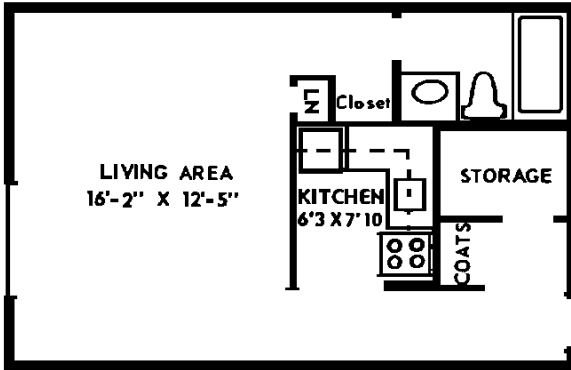
Recreation Opportunities

1. **Tenants' Club** - You are encouraged to join the club, which organizes activities. Bulletin Board and a Communication Board in the lobby keep everyone informed of upcoming events.
2. **Upper Room** - Our "Solarium/Chapel/Meeting Room" on the 10th floor is available for meetings, games, conversation, etc. It may be booked through the Tower office.
3. **Friendship Room** - This room on the Main Floor, with attached kitchen facilities and is available for rental. See the main office for rental prices and guidelines for bookings.

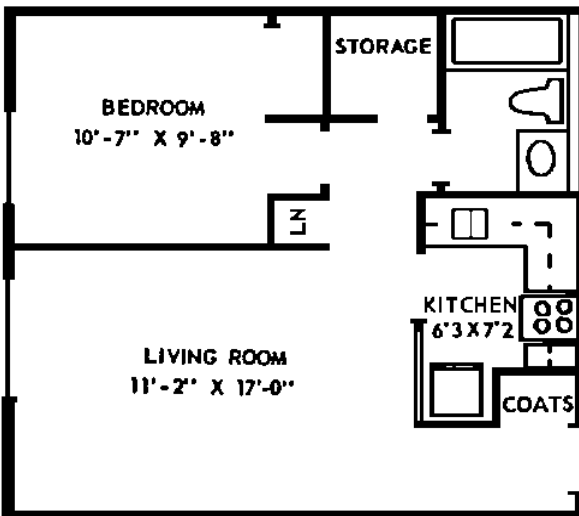
Other Activities – There are several opportunities for social interaction from fall through spring through our Tenant Club. Choirs, bible study and coffee times are offered. Dates and times are posted on the monthly calendar.

Volunteer opportunities in PCH – Tenants are encouraged to volunteer their time and talents for such activities as visiting with the residents, portering residents in wheelchairs to their activities, feeding residents, etc. The PCH Volunteer Coordinator will gladly discuss this with you.

Typical Bachelor Suite



Typical One-Bedroom Suite



NOTE: The average size of the one bedroom suite is 486 sq. ft. and the average size of a bachelor suite is 405 sq. ft.

Some floor plans may vary as to size and layout.